

COLLEZIONE DI POT-POURRIS

PER CHITARRA

SOPRA MOTIVI D'OPERE DI

DONIZETTI, VERDI E PACINI

COMPOSTI DA

P. TONASSI

16821 Donizetti. Primo Pot-pourri sull'Opera LUCIA DI LAMMERMOOR	Fr. 2 70
16822 Secondo Pot-pourri, <i>idem.</i>	» 2 10
16827 Primo Pot-pourri sull'Opera LINDA DI CHAMOUNIX.	» 2 40
16828 Secondo Pot-pourri, <i>idem.</i>	» 2 40
16834 Primo Pot-pourri sull'Opera DON PASQUALE.	» 2 40
16832 Secondo Pot-pourri, <i>idem.</i>	» 2 10
17667 Primo Pot-pourri in forma di Studio sull'Opera MARIA DI ROHAN	» 2 40
17668 Secondo Pot-pourri, <i>idem.</i>	» 1 80
17910 Pacini. Valzer variato sull'Opera SAFFO	» 2 10
17911 Fantasia sull'Opera SAFFO	» 2 10
16823 Verdi. Primo Pot-pourri sull'Opera NABUCCO.	» 1 80
16824 Secondo Pot-pourri, <i>idem.</i>	» 2 10
16825 Primo Pot-pourri sull'Opera ERNANI	» 2 10
16826 Secondo Pot-pourri, <i>idem.</i>	» 2 70
16829 Primo Pot-pourri sull'Opera I LOMBARDI	» 2 40
16830 Secondo Pot-pourri, <i>idem.</i>	» 2 40
17896 Primo Pot-pourri sull'Opera I DUE FOSCARI	» 2 40
17897 Secondo Pot-pourri, <i>idem.</i>	» 2 10
17905 Primo Pot-pourri sull'Opera GIOVANNA D'ARCO.	» 2 10
17906 Secondo Pot-pourri, <i>idem.</i>	» 2 70

Proprietà dell'Editore.

MILANO

R. STABILIMENTO NAZ.  TITO DI GIO. RICORDI

FIRENZE, Ricordi e Jouhaud. - MENDRISIO, Bustelli-Rossi. - TORINO, Giudici e Strada.
NAPOLI, Ricordi e Clausetti.



1924
948

Primo Pot-pourri

SULL' OPERA

LUCIA DI LAMMERMOOR

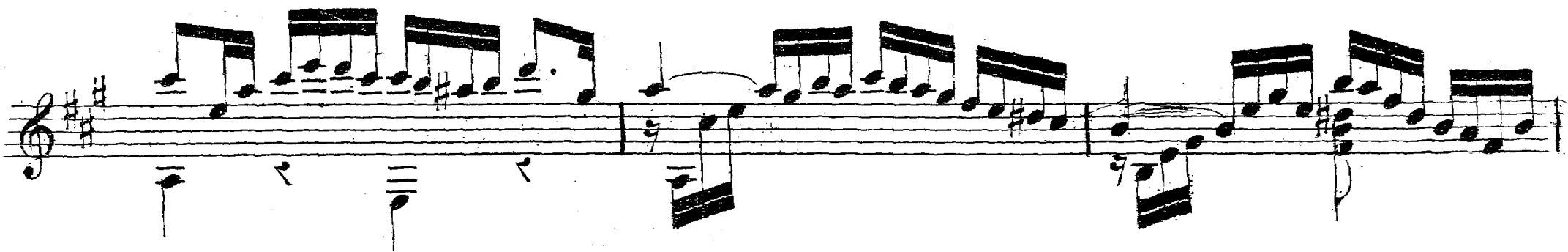
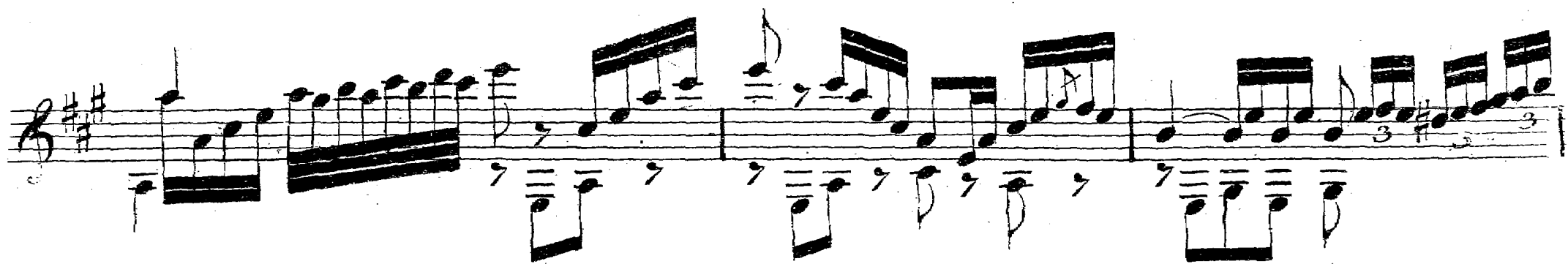
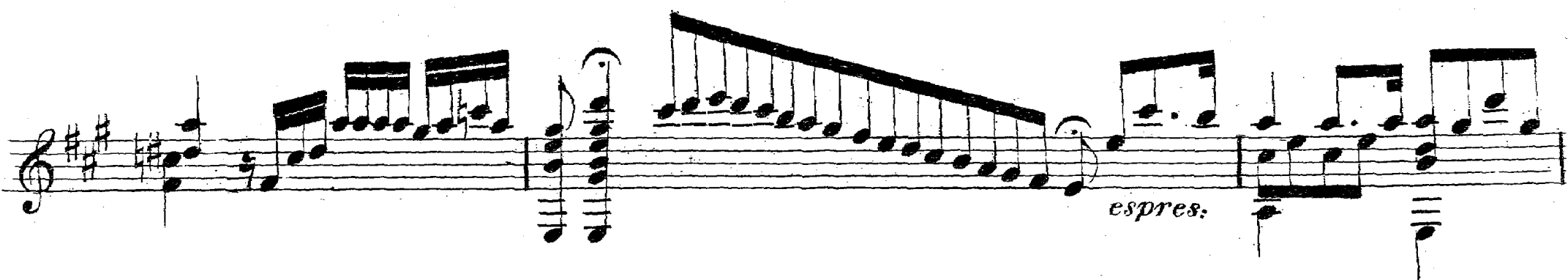
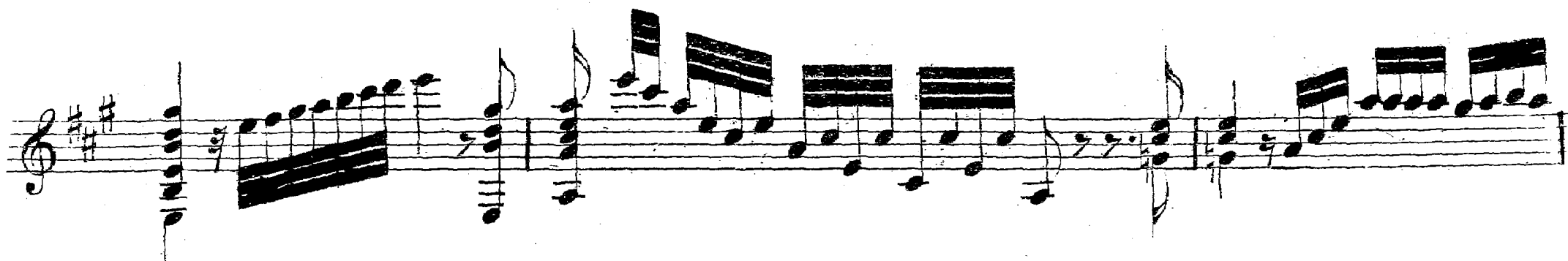
di

G. DONIZETTI

Fr. 2. 70.



LARGHETTO.



ALL?

ad lib: *p*

cres: *f* *ad lib:*

First staff of musical notation. It begins with a treble clef and a key signature of two sharps (F# and C#). The music consists of a series of eighth and sixteenth notes, some beamed together. There are two triplets marked with a '3' and a 'V' above them. The tempo marking 'MOD.to' is written in the upper right corner.

Second staff of musical notation. It continues the piece with similar rhythmic patterns. It features a triplet marked with a '3' and a 'V' above it, and another triplet marked with a '3' and a 'V' above it.

Third staff of musical notation. The melody continues with eighth and sixteenth notes. There are several slurs and accents throughout the staff.

Fourth staff of musical notation. The piece continues with a mix of eighth and sixteenth notes. There are several slurs and accents throughout the staff.

Fifth staff of musical notation. The music features a series of beamed eighth notes. There are several slurs and accents throughout the staff.

Sixth staff of musical notation. The piece concludes with a series of beamed eighth notes and some longer note values. There are several slurs and accents throughout the staff.

Più Mosso.

First musical staff with treble clef, key signature of two sharps (F# and C#), and a dynamic marking of *fp*. The staff contains a complex melodic line with many beamed notes and rests.

Second musical staff, continuing the melodic line from the first staff.

Third musical staff, continuing the melodic line. A dynamic marking of *f* appears at the end of the staff.

Fourth musical staff, continuing the melodic line. It features a dynamic marking of *fp* and a triplet of notes marked with a '3'.

Fifth musical staff, continuing the melodic line.

Sixth musical staff, continuing the melodic line. It includes a dynamic marking of *string.*

First staff of music, treble clef, key signature of two sharps (F# and C#). It begins with a dynamic marking of *cres.* (crescendo) and ends with *dol.* (dolce). The notation consists of a series of chords, each with a downward-pointing stem, and a melodic line of eighth notes.

Second staff of music, treble clef, key signature of two sharps. It features a dynamic marking of *ritard.* (ritardando) and a tempo marking of *MOD^{to}* (Moderato). The notation includes chords with downward stems and a melodic line.

Third staff of music, treble clef, key signature of two sharps. It contains a series of chords with downward stems and a melodic line.

Fourth staff of music, treble clef, key signature of two sharps. It contains a series of chords with downward stems and a melodic line.

Fifth staff of music, treble clef, key signature of two sharps. It contains a series of chords with downward stems and a melodic line.

Sixth staff of music, treble clef, key signature of two sharps. It contains a series of chords with downward stems and a melodic line.

Seventh staff of music, treble clef, key signature of two sharps. It contains a series of chords with downward stems and a melodic line, ending with a dynamic marking of *p* (piano).

First musical staff with treble clef, key signature of two sharps (F# and C#), and a common time signature. It features a series of eighth-note chords and a fermata at the end.

Second musical staff with treble clef, key signature of two sharps, and a common time signature. It continues the eighth-note chordal pattern.

leggero assai

Third musical staff with treble clef, key signature of two sharps, and a common time signature. It includes a dynamic hairpin (crescendo/decrescendo) and a fermata.

Fourth musical staff with treble clef, key signature of two sharps, and a common time signature. It features eighth-note chords with accents (>) and a fermata.

Fifth musical staff with treble clef, key signature of two sharps, and a common time signature. It features eighth-note chords with accents (>) and a fermata.

Sixth musical staff with treble clef, key signature of two sharps, and a common time signature. It features eighth-note chords with a fermata.

Seventh musical staff with treble clef, key signature of two sharps, and a common time signature. It features eighth-note chords with accents (>) and a fermata.

