

Sonate

pour la

GUITARRE

Composée par

CH. GO.

SCHNEIDLER

No. 1

48 f.

chez B. Schott à Mayence.

1924
1212

Allegro.

The image displays ten staves of musical notation for guitar, arranged vertically. The music is written in a 2/4 time signature, as indicated by the first staff. The notation includes various rhythmic patterns, such as eighth and sixteenth notes, and rests. There are several accidentals, including sharps and flats, scattered throughout the piece. The music concludes with a double bar line at the end of the tenth staff. The overall style is that of a classical guitar score.

Handwritten signature or initials

V. S.

This page of guitar sheet music consists of 12 staves of musical notation. The notation is written in a single system, with each staff containing a line of music. The music is primarily composed of eighth and sixteenth notes, often grouped into beamed patterns. There are several instances of triplets, indicated by a '3' over the notes. The key signature is one sharp (F#), and the time signature is 4/4. The music is arranged in a way that suggests a specific fingering or picking pattern, with some notes marked with '2' or '3' below them. The overall style is that of a classical or early 20th-century guitar piece.

GUITARRE.

5

This page of musical notation for guitar consists of 12 staves. The notation is written in a single system, with each staff containing a line of music. The music is primarily composed of eighth and sixteenth notes, often beamed together in groups. There are several instances of triplets and sixteenth-note runs. The notation includes various accidentals (sharps, flats, naturals) and rests. The overall style is characteristic of 19th-century guitar music, possibly a piece by Giuliani or similar. The paper shows signs of age, with some staining and wear.

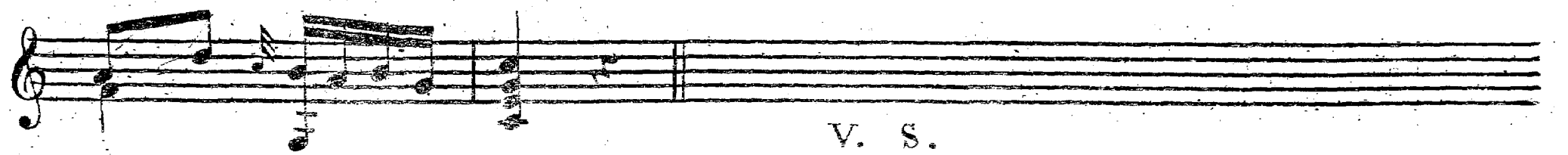
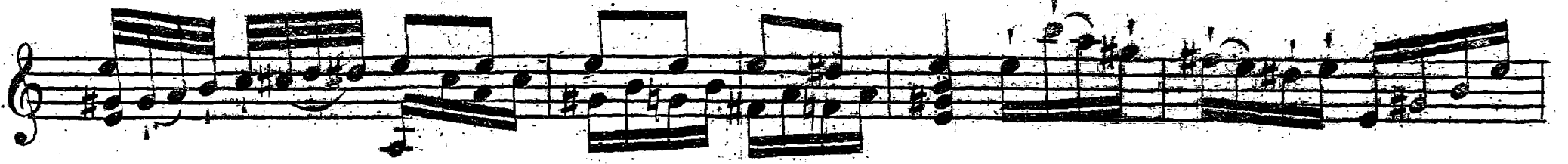
Romance.

The image shows a musical score for guitar, titled "Romance". It consists of ten staves of music, each with a treble clef and a 2/4 time signature. The music is written in a single melodic line, featuring a variety of note values including eighth and sixteenth notes, as well as rests. The key signature is one sharp (F#), and the piece concludes with a double bar line. The paper shows signs of age and wear, with some ink bleed-through from the reverse side.

*Hier der Componist eine Leere
 in der Saite geschribt!*

GUITARRE.

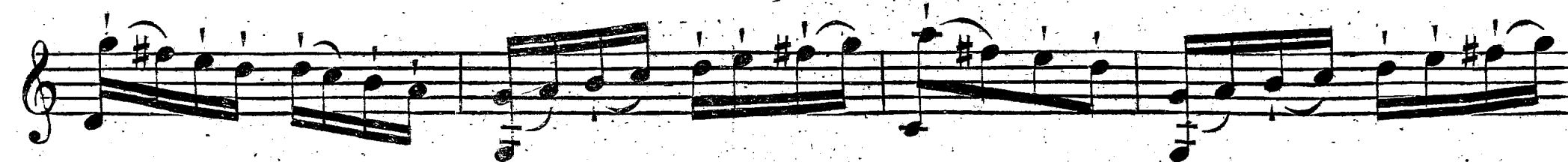
7



V. S.

GUITARRE.

8



GUITARRE.

9



V. S.

A page of musical notation for guitar, consisting of ten staves of music. The notation includes treble clefs, various note values (quarter, eighth, sixteenth notes), rests, and accidentals (sharps). The music concludes with a double bar line and the word "Fine." written below the staff.