

[Handwritten signature]

[Handwritten signature]

[Handwritten signature]



1924
834.

[Faint handwritten text]

Parantelle

Allegretto

This is a handwritten musical score for a piece titled "Parantelle" for Clav. II^{da}. The tempo is marked "Allegretto". The score consists of ten staves of music. The first staff begins with a treble clef, a key signature of two flats (B-flat and E-flat), and a 6/8 time signature. The music is written in a single system. Performance markings include dynamics such as *p* (piano), *mf* (mezzo-forte), and *f* (forte). There are also articulation marks like accents and slurs. A section of the score is marked "loco" and "bis". The score concludes with a section marked "Allegro" in a 2/4 time signature. The handwriting is in black ink on aged paper.

Handwritten musical notation on two staves. The first staff begins with a treble clef, a key signature of two flats (B-flat and E-flat), and a 4/4 time signature. The music consists of eighth and sixteenth notes. A dynamic marking of *f* (forte) is present. The second staff continues the melody with similar rhythmic patterns. A *cres:* (crescendo) marking is written above the second staff.

Handwritten musical notation on two staves. The first staff continues the melody with eighth notes. A dynamic marking of *f* is present. The second staff features a triplet of eighth notes, indicated by a bracket and the number '3'. A dynamic marking of *p dolce* (piano dolce) is written below the second staff.

Handwritten musical notation on two staves. The first staff continues the melody. A dynamic marking of *p* is present. The second staff features a triplet of eighth notes, indicated by a bracket and the number '3'. A dynamic marking of *p* is written below the second staff.

Handwritten musical notation on two staves. The first staff features a long melodic line with a slur and a dynamic marking of *ma*. The second staff continues the melody with a dynamic marking of *p*.

Handwritten musical notation on two staves. The first staff continues the melody with a dynamic marking of *p*. The second staff features a triplet of eighth notes, indicated by a bracket and the number '3'. A dynamic marking of *p* is written below the second staff.

Handwritten musical notation on two staves. The first staff continues the melody with a dynamic marking of *p*. The second staff features a triplet of eighth notes, indicated by a bracket and the number '3'. A dynamic marking of *p* is written below the second staff.

Handwritten musical notation on two staves. The first staff continues the melody with a dynamic marking of *p*. The second staff features a triplet of eighth notes, indicated by a bracket and the number '3'. A dynamic marking of *p* is written below the second staff.

Handwritten musical notation on two staves. The first staff continues the melody with a dynamic marking of *p*. The second staff features a triplet of eighth notes, indicated by a bracket and the number '3'. A dynamic marking of *p* is written below the second staff.

This image shows a page of handwritten musical notation, consisting of ten staves. The notation is written in black ink on a white background. The first staff begins with a treble clef and a key signature of two flats (B-flat and E-flat). The music is written in a style that appears to be a sketch or a working draft, with some ink bleed-through and corrections. The notation includes various note values, rests, and dynamic markings. The second staff has a treble clef and a key signature of one flat (B-flat). The third staff has a treble clef and a key signature of one flat (B-flat). The fourth staff has a treble clef and a key signature of one flat (B-flat). The fifth staff has a treble clef and a key signature of one flat (B-flat). The sixth staff has a treble clef and a key signature of one flat (B-flat). The seventh staff has a treble clef and a key signature of one flat (B-flat). The eighth staff has a treble clef and a key signature of one flat (B-flat). The ninth staff has a treble clef and a key signature of one flat (B-flat). The tenth staff has a treble clef and a key signature of one flat (B-flat). The music is written in a style that appears to be a sketch or a working draft, with some ink bleed-through and corrections.

Handwritten musical notation on a single staff. The notation includes a treble clef, a key signature of one flat (B-flat), and a time signature of 6/8. The melody consists of several measures with notes, rests, and dynamic markings such as accents and slurs. The notes are written in a cursive, handwritten style.

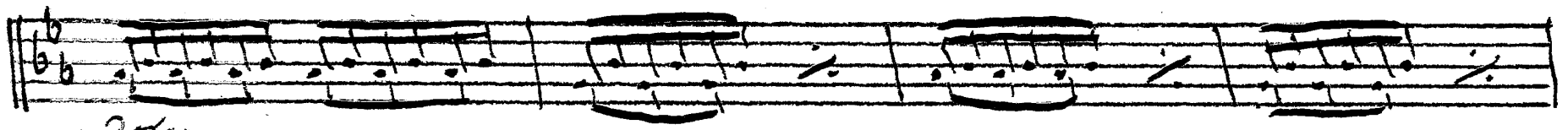
Handwritten musical notation on a single staff. The notation includes a treble clef, a key signature of one flat (B-flat), and a time signature of 6/8. The melody continues with notes, rests, and dynamic markings. There are some slurs and accents present.

Handwritten musical notation on a single staff. The notation includes a treble clef, a key signature of one flat (B-flat), and a time signature of 6/8. The melody continues with notes, rests, and dynamic markings. There are some slurs and accents present.

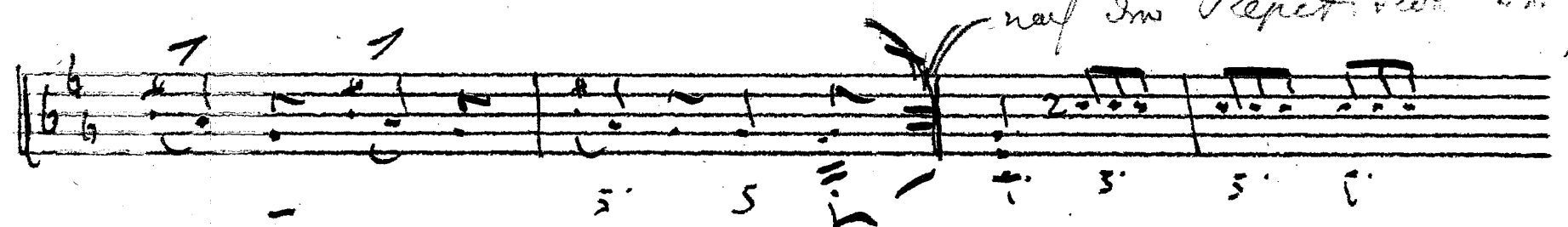
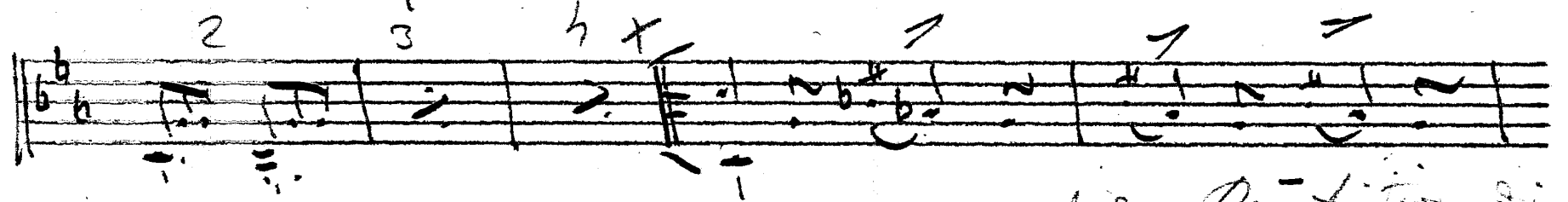
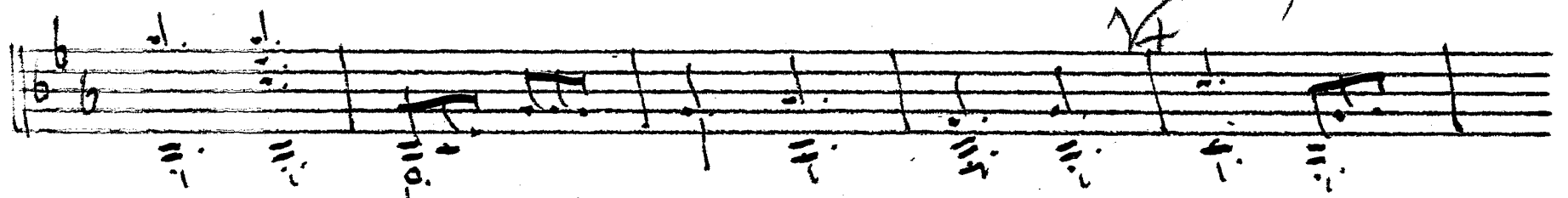
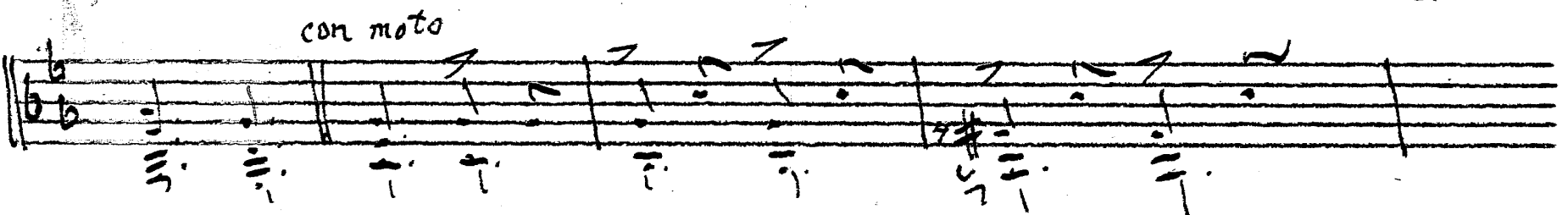
Handwritten musical notation on a single staff. The notation includes a treble clef, a key signature of one flat (B-flat), and a time signature of 6/8. The melody continues with notes, rests, and dynamic markings. There are some slurs and accents present.

Fin.

Four sets of empty musical staves, each consisting of five horizontal lines. The staves are blank, with no notation or markings.



dolce



nach der Repetition in 4/4
12.76

Prestissimo