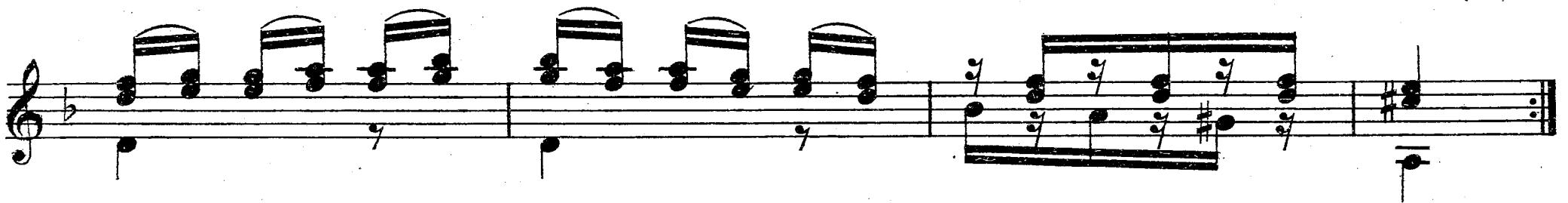
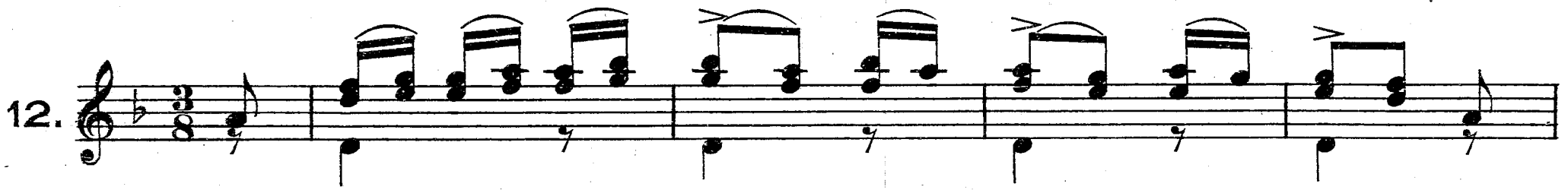
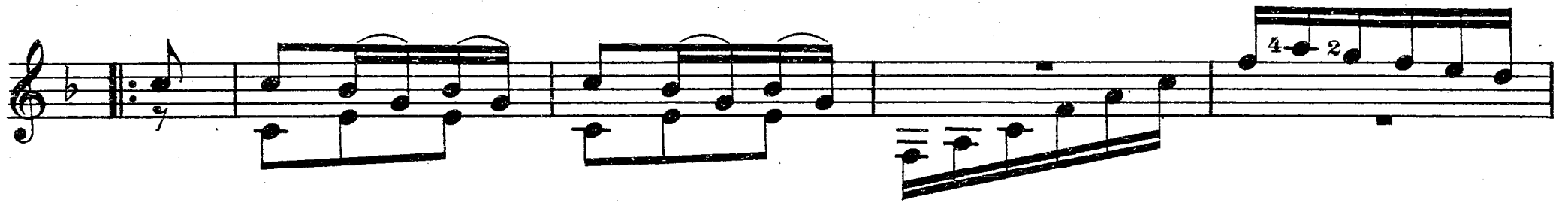


Kleine Übungsstücke in Ländlerart.

L. Legnani
(aus 36 Ländler, No 11-17.)



Musical staff with treble clef, key signature of one flat, and a repeat sign. It features a melody with triplet markings and a bass line with a 7-fingered chord.

Musical staff with treble clef and a key signature of one flat, showing a complex rhythmic pattern with many slurs and ties.

13.

Musical staff with treble clef and a key signature of two sharps, featuring a melody with slurs and a bass line with a 7-fingered chord.

14.

Musical staff with treble clef, key signature of two sharps, and a repeat sign. It includes a 'VII' marking above the staff and a 7-fingered chord in the bass line.

15.

Musical staff with treble clef, key signature of two sharps, and a repeat sign. It includes markings 'XI' and 'IX' above the staff and a 7-fingered chord in the bass line.

16.

17.