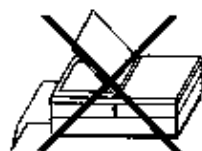


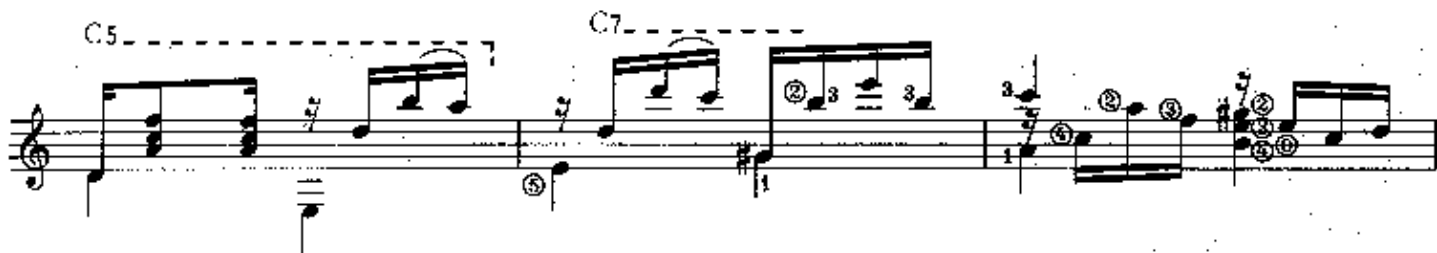
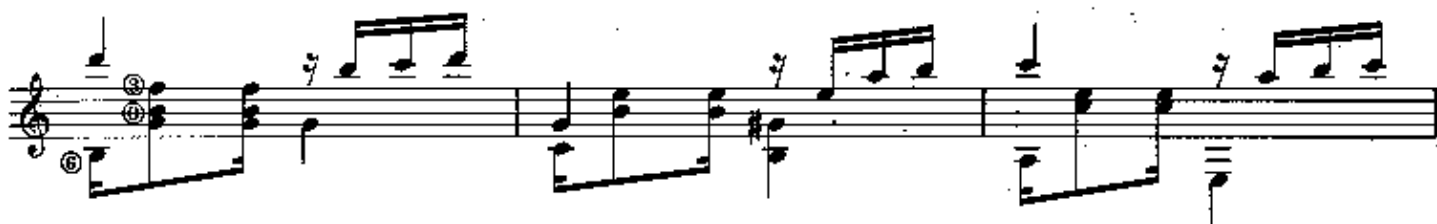
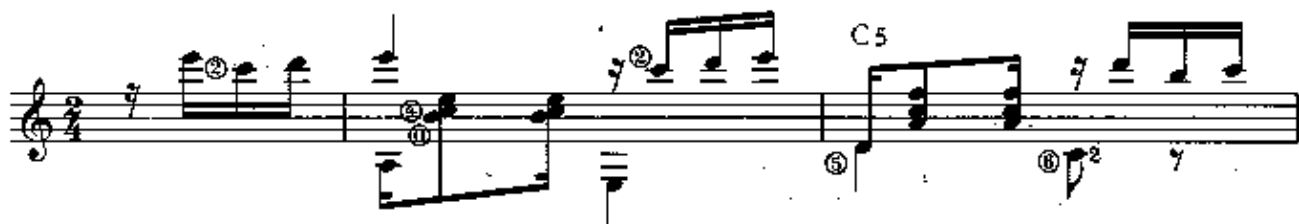
CHORO DEL CAMINANTE

(Choro)



La ley prohíbe
fotocopiar esta obra

Eduardo Falú



C1

C6 C8

C7 C5

C2 C5

C6, C7

The image displays seven staves of musical notation. Each staff begins with a treble clef. The notation includes various note values such as quarter, eighth, and sixteenth notes, as well as rests. Chord symbols are placed above the staves: C2, C7, C3, C1, C5, C3, C1, C3, C3, C1-7, C1-7, A, and C3. Some notes are circled, and there are some markings like '1', '3', '4', '2', '3', '4' under notes, possibly indicating fingerings or specific techniques. The notation is arranged in a standard musical score format.