

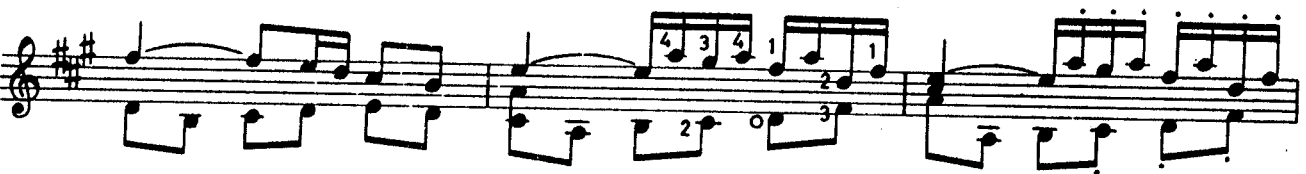
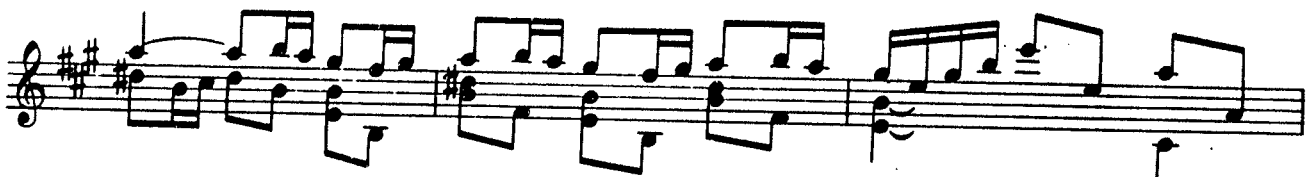
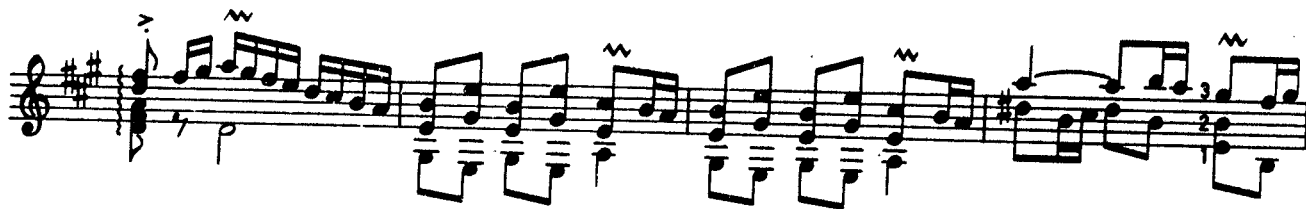
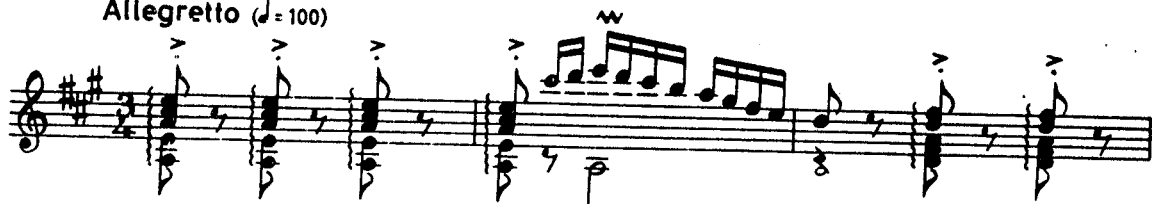
DANCE OF THE CORREGIDOR

From "The Three Cornered Hat"

Arranged for Guitar by
SIEGFRIED BEHREND

MANUEL DE FALLA

Allegretto (♩ = 100)



First musical staff, treble clef, key signature of two sharps (F# and C#). It begins with a series of chords marked with a 'v' above them. The melody consists of eighth and sixteenth notes, including a triplet of eighth notes. The staff concludes with a double bar line.

Second musical staff, treble clef, key signature of two sharps. It features a melodic line with eighth and sixteenth notes and a bass line with quarter notes. A 'v' is marked above the first note. The staff ends with the instruction 'arm.' below the final note.

Third musical staff, treble clef, key signature of two sharps. It contains a triplet of eighth notes marked with a circled '2' and another triplet marked with a circled '3'. The staff includes various rhythmic patterns and concludes with a double bar line.

Fourth musical staff, treble clef, key signature of two sharps. It features a melodic line with eighth and sixteenth notes, including a triplet of eighth notes. The staff concludes with a double bar line.

Fifth musical staff, treble clef, key signature of two sharps. It consists of a continuous melodic line of eighth and sixteenth notes. The staff concludes with a double bar line.

Sixth musical staff, treble clef, key signature of two sharps. It begins with the instruction 'pizz.' above the first note. The staff contains a melodic line with eighth and sixteenth notes, including a triplet of eighth notes. The staff concludes with a double bar line.

