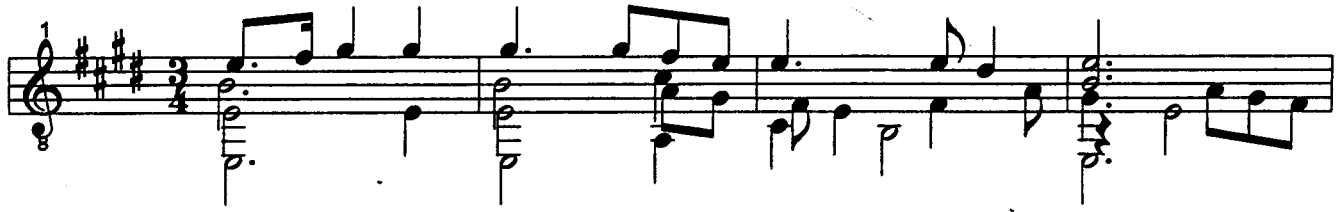


Mr. Langton's Galliard

Transcribed by
Joseph Suryanata

John Dowland
(1563 -1626)



20

8

24

8

28

8

31

8

35

8

40

8

Musical staff 1 (measures 44-48). Treble clef, key signature of three sharps (F#, C#, G#), 8/8 time signature. The melody consists of eighth and quarter notes, while the bass line features a steady eighth-note accompaniment.

Musical staff 2 (measures 49-52). Treble clef, key signature of three sharps, 8/8 time signature. The melody continues with eighth notes, and the bass line includes a repeat sign at measure 51.

Musical staff 3 (measures 53-56). Treble clef, key signature of three sharps, 8/8 time signature. The melody features a mix of eighth and quarter notes, with the bass line providing harmonic support.

Musical staff 4 (measures 57-60). Treble clef, key signature of three sharps, 8/8 time signature. The melody includes a long note with a slur, and the bass line continues with eighth notes.

Musical staff 5 (measures 61-64). Treble clef, key signature of three sharps, 8/8 time signature. The melody features a slur over several notes, and the bass line maintains its eighth-note pattern.

Musical staff 6 (measures 65-68). Treble clef, key signature of three sharps, 8/8 time signature. This system includes a first ending bracket labeled '1.' and a second ending bracket labeled '2.'.