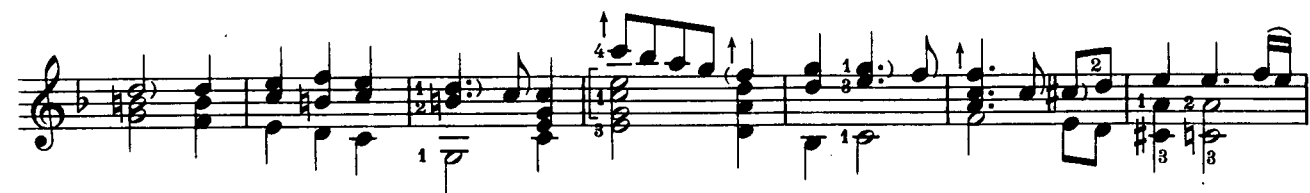


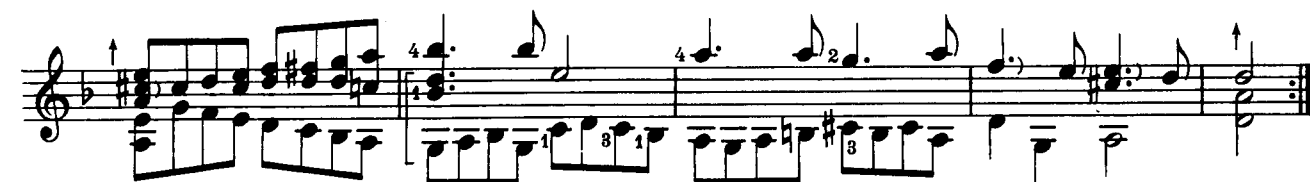
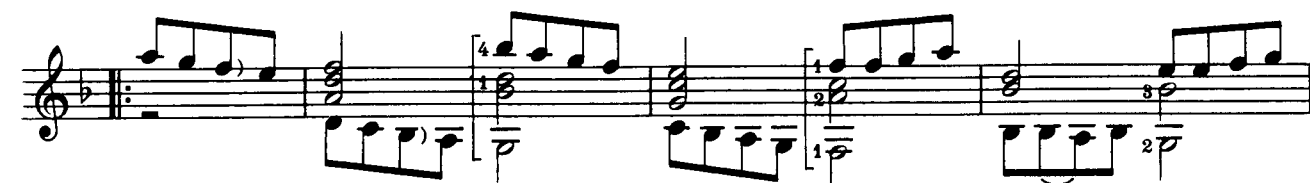
Suite  
Prélude

François Campion

Tombeau



## Gavotte



Air

Musical score for 'Air' in G major, 3/4 time. The score consists of six staves of music. The first staff begins with a treble clef and a key signature of one sharp (F#). The melody is characterized by flowing eighth and sixteenth notes. The second staff includes fingering numbers (1, 2, 3, 4) and dynamic markings (p). The third staff features a first and second ending. The fourth and fifth staves continue the melodic line with various articulations and dynamics. The sixth staff concludes the piece with a final cadence.

Sarabande

Musical score for 'Sarabande' in G major, 3/4 time. The score consists of three staves of music. The first staff begins with a treble clef and a key signature of one sharp (F#). The melody is slower and more rhythmic than the 'Air' piece. The second staff includes fingering numbers (1, 2, 3, 4) and dynamic markings (p). The third staff concludes the piece with a final cadence.

