

When To Her Lute Corinna Sings

This song of Campion's is from Rosseter's *Book of Ayres*, published in 1601. It has great charm when performed with a light touch, and the last four measures have a most interesting interplay between voice and instrument.

- 1 The third position is necessary in preparation for the following chord, but it may be easier to place both third and fourth fingers at this point.
- 2 The original was an octave lower; unfortunately, this is impossible on the guitar. The stretch is worth it to sustain the chord.

Thomas Campion

When to her lute Co - rin - na sings, Her voice re - lives — the lead - en strings,

I

III

II

And doth in high - est notes ap - pear, As an - y chal - langed e - cho clear;

But when she doth of mourn - ing speak, Ev'n with her sighs, her sighs,

III

her sighs the strings do break, The — strings do break.

II

2

4

1/2

II

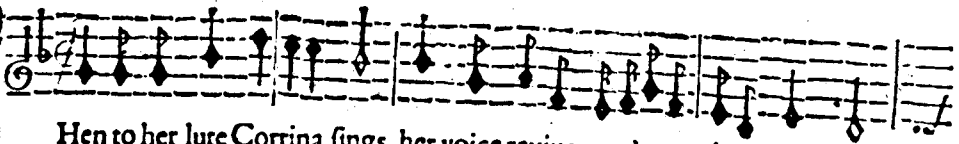
0

3

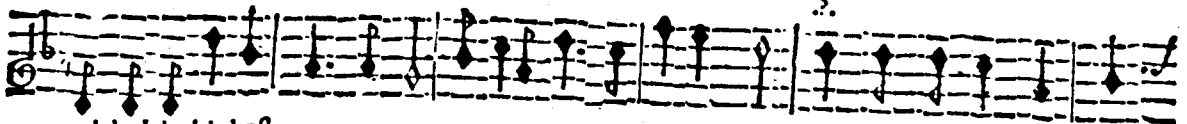
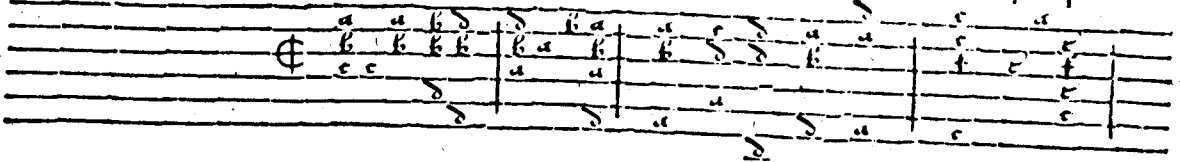
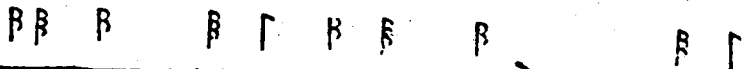
2

0

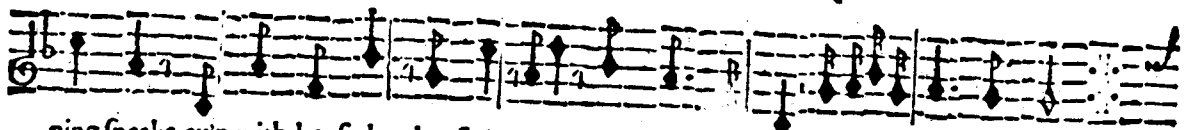
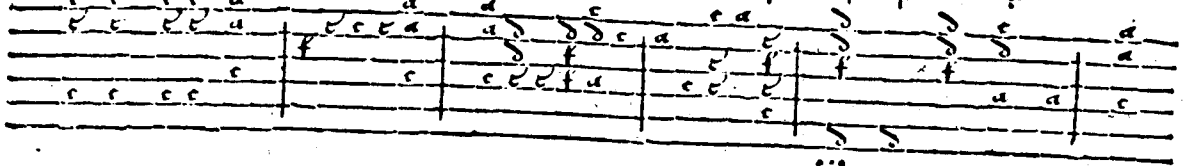
And as her lute doth live or die,
 Led by her passion, so must I,
 For when of pleasure she doth sing,
 My thoughts enjoy a sudden spring;
 But if she doth of sorrow speak,
 Ev'n from my heart, my heart the strings do break,
 The strings do break.



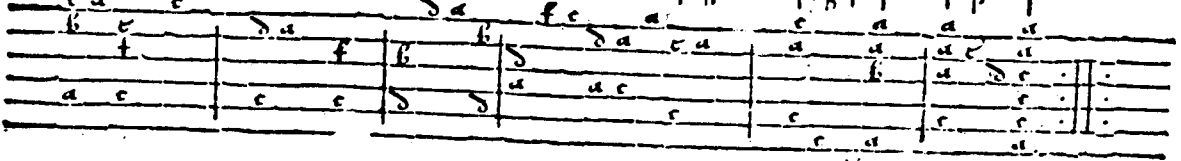
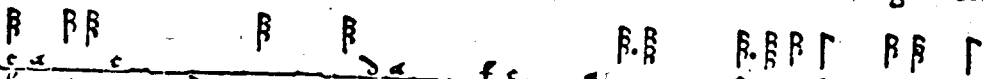
Then to her lute Corrina sings, her voice revives the lea- den strings,



and doth in highest noates appeare as any challeng'd eccho cleere, but when she doth of mour-



ning speake, ev'n with her sighes her sighes, ii. the strings do breake the strings do breake.



And as her lute doth live or die,
 Led by her passion, so must I,
 For when of pleasure she doth sing,
 My thoughts enjoy a sodaine spring,
 But if she doth of sorrow speake,
 Ev'n from my hart the strings doe breake.