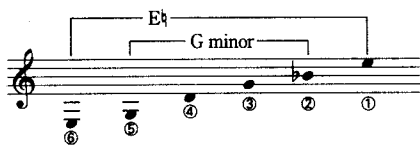
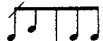
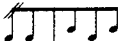


Commentary

●Tuning :



●  =Rather faster

●  =Faster group

●The blank space in **[A]~[B]** means "Count down to death". Play as quietly as possible.

● The tempo shift of "Velocissimo" and "Vivace" in **[C]~[D]** should be done decisively. Be careful of the delicate change of rhythm and tone, and the place of accent.

●In 12nd bar after **[E]**, right hand technique is same as the middle section of "Elogio de la danza".

●The tempo and atmosphere in **[F]~[H]**, refer to Takemitsu's piano piece "RAIN SKETCH II ~ IN MEMORIAM OLIVIER MESSIAEN ('92)".

●Duration : approximately 6 minutes.

●Performance data

World premiere : "Shin-ichi Fukuda guitar recital" January 31st 1997 at Kioi Hall in Tokyo.

Recording : Shin-ichi Fukuda / "IN MEMORIAM~ Guitar works of Toru Takemitsu "(Denon / COCO-80447)

For Shin-ichi Fukuda
"HIKA"
 IN MEMORIAM TORU TAKEMITSU

Fingered by Composer & Shin-ichi Fukuda

LEO BROUWER

Tempo Libero

②=B \flat
 ⑤=G

harm.12

mf [like bells]
 鐘のように...

mf

p

Andante ($\text{♩} = 100 \sim 104$)

A

harm.12

p *legatissimo*
 (Let Vibrate)

harm.12

harm.12

harm.12

rit.

pizz. (9)

B

$\text{♩} = 7$ *lunga*

legatissimo

a tempo

rit. *ppp* *poco*

C **Tempo Libero**

harm.12 *lunga* son ord. *p*

mf

Velocissimo (♩=100~102)

p *lunga*

f molto agitato

D **Vivace** (♩=90~92)

son ord. *f* *Metallique* son ord.

gliss.

Metallique son ord. *f*

④
p sub.

C.6
p

C.6
p f (f)

C.3
mf

E
f marcato f pp

④
p pp legato poco (eco)

sul tasto (diff. colour) *rall.* - -

p L.V.

rit. (♩=♩) Pos.6

pp (pp) leggerissimo

cresc. molto *sf marcato* *pp ritmico*

rit. - - (♩=♩) a tempo

pp leggerissimo (diff. color)

cresc. molto *f marc.*

rit.

Tempo Libero

harm.12

F
mf
f marcato molto
lunga

Andante (♩=100~104)

C.3

p legatissimo
legatissimo

p legatissimo

C.6
p legatissimo
legatissimo

G
3
9:8
pp sub. cresc. molto e accel.
pp sub. cresc. molto e accel.

marcatissimo

Velocissimo

ff
L.V.
pp cresc. molto e accel.

Andante (♩=100~104)

come prima