

No. 103.

VARIATIONS FAVORITES
pour deux Guitares

tirées du Grand Septuor de L. van Beethoven.

arrangées et dédiées

à Monsieur

C. de Zenther

par

Vinc. Schuster

N^o 103.

A VIENNE

Pr. 50 c. M.

chez A. Diabelli et Comp.

Graben N^o 1133.

Andante.

THEMA.

The first system of the 'THEMA' section consists of two staves. The upper staff is in treble clef and the lower in bass clef. The music begins with a treble clef and a 2/4 time signature. The first measure has a dynamic marking of *p*. The melody in the treble staff moves through several intervals, with a crescendo leading to a fortissimo (*f*) dynamic. The bass staff provides a harmonic accompaniment with chords and moving lines. The system concludes with a double bar line.

VAR: 1.

The 'VAR: 1' section is a more technically demanding variation. It begins with a treble clef and a 2/4 time signature. The first measure has a dynamic marking of *f*. The notation is dense, featuring many sixteenth and thirty-second notes. There are several dynamic markings, including *f* and *p*. The piece includes various fingerings and articulations, such as slurs and accents. The variation concludes with a double bar line.

C. et D. N^o 103.



VAR: 2.

 Musical notation for Variation 2, measures 1-10. Treble clef, 2/4 time signature. Dynamics include *f*, *p*, and *sf*.

VAR: 3.

 Musical notation for Variation 3, measures 1-10. Treble clef, 2/4 time signature. Dynamics include *dolce*, *p*, *f*, and *ritar.*

VAR: 4.

 Musical notation for Variation 4, measures 1-10. Treble clef, 2/4 time signature. Dynamics include *Minore.*, *pp*, and *fp*.

CITARRA. Qda.

Maggiore.

VAR: 5.

p *p* *f* *f* *cres:*

1^{ma} *Qda.*

p *f* *f* *f* *p* *pp*

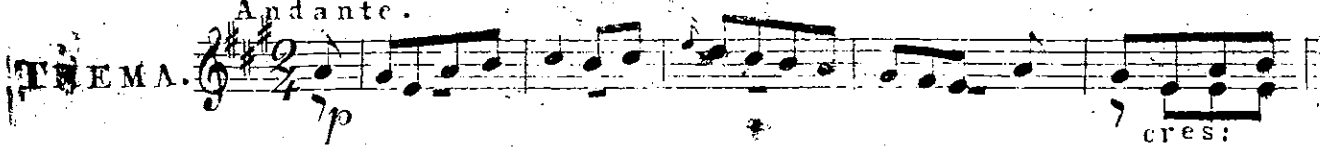
calando

sf **FIN.**

C H I T A R R A 1^{ma}.

Col capo tasto alla 3^a pos.
o Terz = Chitarra

Andante.



C H I T A R R A 1^{ma}.

5te pos: 9te pos:

VAR: 2.

6te pos: 4te pos:

2te pos:

VAR: 3. dolce cres = = =

= cen = = = do f

f p cres: = = = = = f

Minore.

VAR:4.

Musical score for Variation 4, Minore. The piece is in 2/4 time and one sharp (F#) key signature. It consists of six staves of music. The first staff begins with a piano (*p*) dynamic. The second staff features a crescendo (*cres:*). The third staff includes a diminuendo (*dimin:*) and a pianissimo (*pp*) dynamic. The fourth staff starts with a fortissimo piano (*fp*) dynamic. The fifth staff includes another crescendo (*cres:*). The sixth staff concludes with a diminuendo (*dimin:*) and a pianissimo (*pp*) dynamic. The notation includes various rhythmic patterns, slurs, and articulation marks.

Maggiore.

VAR:5.

Musical score for Variation 5, Maggiore. The piece is in 2/4 time and two sharps (F# and C#) key signature. It consists of two staves of music. The first staff begins with a piano (*p*) dynamic. The second staff starts with a forte (*f*) dynamic. The notation includes various rhythmic patterns and articulation marks.

C H I T A R R A 1^{ma}.

f *p* *ma.* *Qda.* *cres = = =* *cen = = do*
p *dolce*
p *p* *p*
f *pp* *f* *f*
ca = = = lau = = = do
pp *sf* *FINE.*